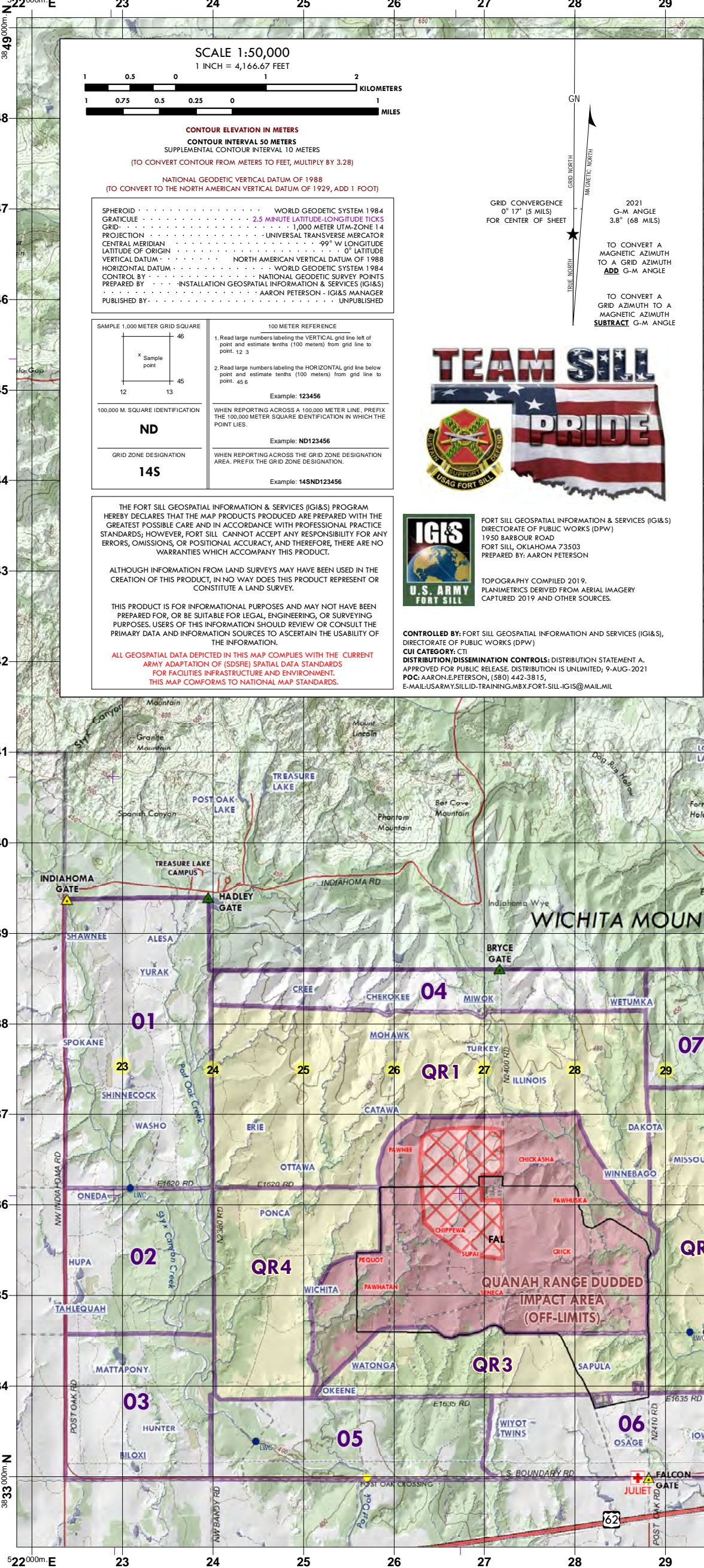


U.S. ARMY - FIRES CENTER OF EXCELLENCE AND FORT SILL NATURAL RESOURCES SPORTSMEN SERVICES RECREATION MAP

RECREATIONAL USE ONLY
NOT INTENDED FOR TARGETING



NOTES:
ALL INDIVIDUALS PURSUING RECREATIONAL ACTIVITIES THAT REQUIRE THEM TO BE MORE THAN 100 FEET FROM A PAVED ROAD MUST FOLLOW CHECK-IN PROCEDURES PER USAFACS REG. 200-1.

LISTS OF PERMANENTLY OFF-LIMITS, RESTRICTED AND MANAGED PONDS ARE MAINTAINED AT SPORTSMEN SERVICES (BUILDING 145B).

PERMANENTLY OFF-LIMITS PONDS IN RED
EXAMPLE: "WEST (BALMER) LAKE"

MANAGED/STOCKED PONDS (UNDERLINED)
EXAMPLE: "FLAGG"

GAME WARDEN HOTLINE
(580) 442-6050

NATURAL RESOURCES & ENFORCEMENT
FORT SILL, OKLAHOMA

SCALE 1:50,000
1 INCH = 4,166.67 FEET
1:50,000 METERS

CONTOUR ELEVATION IN METERS
CONTOUR INTERVAL 30 METERS
SUPPLEMENTAL CONTOUR INTERVAL 15 METERS
(TO CONVERT CONTOUR FROM METERS TO FEET, MULTIPLY BY 3.28)

NATIONAL GEODETIC VERTICAL DATUM OF 1929, ADD 1 FOOT!
(TO CONVERT TO THE NORTH AMERICAN VERTICAL DATUM OF 1988, ADD 1 FOOT)

SPHEROID - WORLD GEODETIC SYSTEM 1984
PROJECTION - UTM
UNIT - METERS
PRIME MERIDIAN - GREENWICH
FALSE EASTING - 500,000 METERS
FALSE NORTING - 10,000,000 METERS
SCALE FACTOR - 0.999 996 3
DIAPHRAGMATIC CORRECTION - 0.000 000 5
VERTICAL DATUM - NORTH AMERICAN VERTICAL DATUM OF 1988
HORIZONTAL DATUM - WORLD GEODETIC SYSTEM 1984
CONTROL POINTS - NATIONAL GEODETIC SURVEY POINTS
PREPARED BY - ARON PETERSON - IGIS&S MANAGER
DATE - 06/02/21

GRID CONVERGENCE 07.77 (S INCHES)
G.M. ANGLE 3.87 (88 METS)
TO CONVERT A MAGNETIC AZIMUTH TO A GRID AZIMUTH, ADD G.M. ANGLE
TO CONVERT A GRID AZIMUTH TO A MAGNETIC AZIMUTH, SUBTRACT G.M. ANGLE

100 METER REFERENCE
1. Read large numbers labeling the horizontal grid line and estimate tenths (100 meters) from grid line to point used.
2. Read large numbers labeling the vertical grid line and estimate tenths (100 meters) from grid line to point used.
Example: 123456

1000 METER SQUARE IDENTIFICATION
WHEN REPORTING A COORDINATE, REPORT THE 1000 METER SQUARE IDENTIFICATION IN THE POINT USE.
Example: 123456

1000 METER SQUARE IDENTIFICATION
WHEN REPORTING A COORDINATE, REPORT THE 1000 METER SQUARE IDENTIFICATION IN THE POINT USE.
Example: 148ND123456

GRID ZONE IDENTIFICATION
WHEN REPORTING A COORDINATE, REPORT THE GRID ZONE IDENTIFICATION AREA. PREFER THE GRID ZONE IDENTIFICATION AREA.
Example: 148ND123456

TEAM SILL PRIDE

IGIS&S
U.S. ARMY
FORT SILL

THE FORT SILL GEOSPATIAL INFORMATION & SERVICES (IGIS&S) PROGRAM HEREBY DECLARES THAT THE MAP PRODUCTS PRODUCED ARE PREPARED WITH THE GREATEST POSSIBLE CARE AND IN ACCORDANCE WITH PROFESSIONAL PRACTICE STANDARDS; HOWEVER, FORT SILL CANNOT ACCEPT ANY RESPONSIBILITY FOR ANY ERRORS, OMISSIONS, OR INACCURACIES THAT MAY OCCUR. THERE ARE NO WARRANTIES WHICH ACCOMPANY THIS PRODUCT.

ALTHOUGH INFORMATION FROM LAND SURVEYS MAY HAVE BEEN USED IN THE CREATION OF THIS PRODUCT, IN NO WAY DOES THIS PRODUCT REPRESENT OR CONSTITUTE A LAND SURVEY.

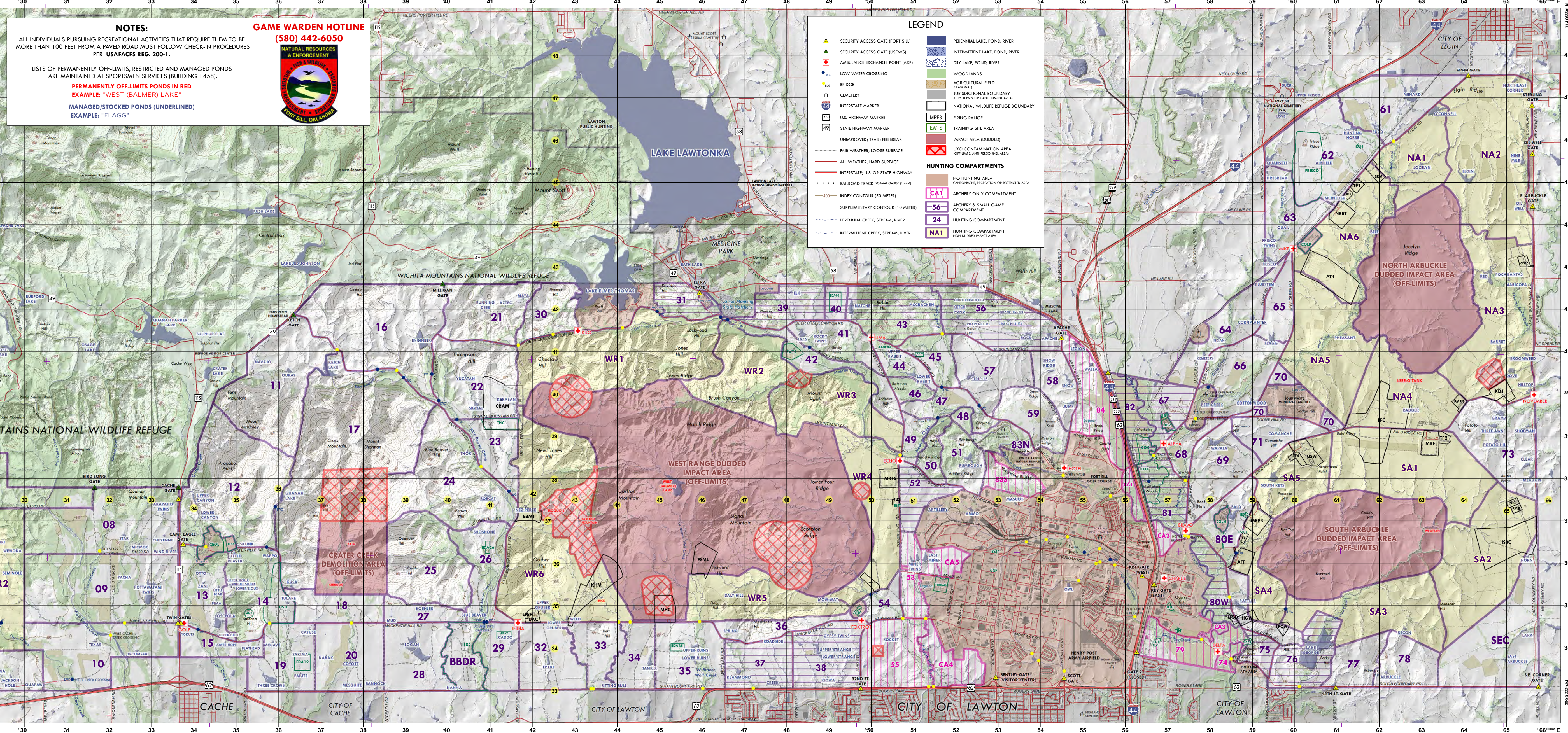
THIS PRODUCT IS FOR INFORMATIONAL PURPOSES AND MAY NOT HAVE BEEN PREPARED FOR, OR BE SUITABLE FOR, LEGAL, ENGINEERING, OR SURVEYING PURPOSES. USERS OF THIS INFORMATION SHOULD REVIEW OR CONSULT THE PRIMARY DATA AND INFORMATION SOURCES TO ASCERTAIN THE USABILITY OF THE INFORMATION.

ALL GEOSPATIAL DATA DEPICTED IN THIS MAP COMPLIES WITH THE CURRENT ARMY ADAPTATION OF DOUBLE SPATIAL DATA STANDARDS FOR FACILITIES INFRASTRUCTURE AND ENVIRONMENT.
THIS MAP CONFORMS TO NATIONAL MAP STANDARDS.

CONTROLLED BY FORT SILL GEOSPATIAL INFORMATION AND SERVICES (IGIS&S), DIRECTORATE OF PUBLIC WORKS (DPW).
PLANNING SERVICES FROM AERIAL IMAGERY CAPTURED 2019 AND OTHER SOURCES.
CUR CATEGORY: C
DISTRIBUTION STATEMENT: UNCLASSIFIED//FOR OFFICIAL USE ONLY
UNCLASSIFIED//FOR OFFICIAL USE ONLY
E-MAIL: IGIS&S@SILL.ARMY.MIL

CATFISH UNDER 10" MUST BE IMMEDIATELY RELEASED.
DAILY CHANNEL CATFISH CREEL LIMIT OF 6.

BASS CAUGHT IN RED SLOT (13"-16") MUST BE IMMEDIATELY RELEASED.
DAILY BASS CREEL LIMIT OF 5. (NO MORE THAN 2 OVER 16")



LEGEND

- SECURITY ACCESS GATE (FORT SILL)
- SECURITY ACCESS GATE (USPWS)
- AMBULANCE EXCHANGE POINT (AXP)
- LOW WATER CROSSING
- BRIDGE
- CEMETERY
- INTERSTATE MARKER
- U.S. HIGHWAY MARKER
- STATE HIGHWAY MARKER
- UNIMPROVED, TRAIL, FIREBREAK
- FAIR WEATHER, LOOSE SURFACE
- ALL WEATHER, HARD SURFACE
- RAILROAD TRACK, NORMAL GAUGE (1.44M)
- INDEX CONTOUR (50 METER)
- PERENNIAL CREEK, STREAM, RIVER
- INTERMITTENT CREEK, STREAM, RIVER
- PERENNIAL LAKE, POND, RIVER
- INTERMITTENT LAKE, POND, RIVER
- DRY LAKE, POND, RIVER
- WOODLANDS
- AGRICULTURAL FIELD
- JURISDICTIONAL BOUNDARY (CITY/TOWN OR CANTONMENT AREA)
- NATIONAL WILDLIFE REFUGE BOUNDARY
- MRF3 FIRING RANGE
- EWTS TRAINING SITE AREA
- IMPACT AREA (DUDDIED)
- LIXO CONTAMINATION AREA (OFF LIMITS, AND/OR RESTRICTED AREA)

HUNTING COMPARTMENTS

- NO-HUNTING AREA (CANTONMENT, RECREATION OR RESTRICTED AREA)
- CA1 ARCHERY ONLY COMPARTMENT
- 56 ARCHERY & SMALL GAME COMPARTMENT
- 24 HUNTING COMPARTMENT
- NA1 HUNTING COMPARTMENT (NON-DUDDIED IMPACT AREA)